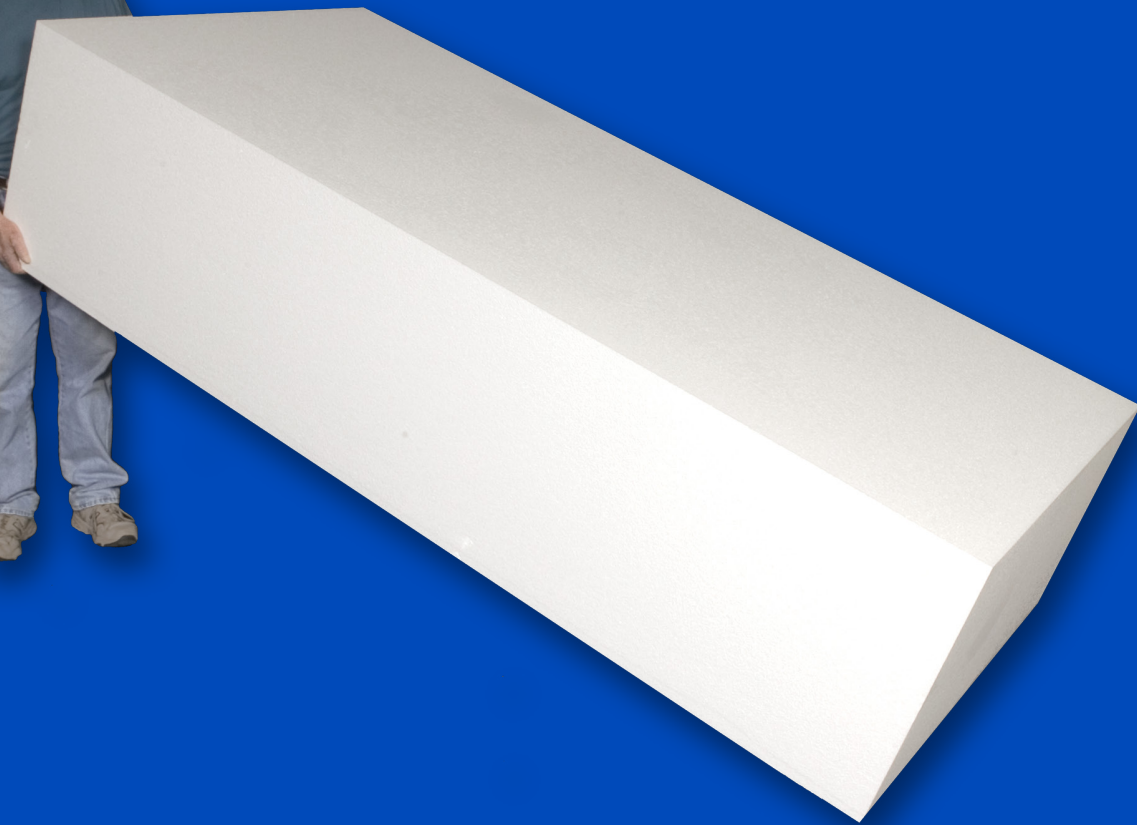


 THERMAL  
FOAMS, INC.

 THERMAL FOAMS/  
SYRACUSE, INC.



**LIGHTWEIGHT FILL  
MATERIAL**

# YOU'RE IN CONTROL OF YOUR GEOTECHNICAL SOLUTIONS WITH TRU-R GEOFOAM

## Materials. Labor. Costs. Tru-R Geofoam means control, not compromise.

Tru-R Geofoam is engineered to give you the greatest possible control for your project application: from design and timelines, to materials and costs, and —ultimately—control over your results. The advantages to using Tru-R Geofoam include:

- Predictable material behavior
- Manufactured to meet ASTM D6817
- Variety of Types to meet specific project requirements
- Super lightweight compared to other fills
- Inert in long-term burial conditions, no leachates
- Easily shaped in field or supplied prefabricated
- Borate termite protection available
- Cost effective solution
- Long-lasting, strong, and stable

## This looks like a job for Tru-R Geofoam.

In the construction industry, Tru-R Geofoam is among the most versatile lightweight materials available. Traditional earth materials are heavy and can cause settlement, instability or lateral pressures. Other fill materials such as foamed concrete, waste tires, soil, woodchips, wood fiber, etc., have higher densities and are variable in their makeup. They also have limitations in handling and can be weather sensitive, thus requiring staged construction and/or preloading, surcharging and draining, etc.

## Size and Shape.

Tru-R Geofoam is produced in block form and is easily positioned at the work site.

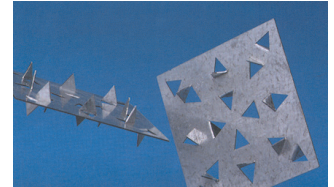
Standard sizes:

- 4' (1.2 m) widths
- 8' (2.4 m) up to 16' (4.8 m) lengths
- 3" (75 mm) to 30" (760 mm) thickness

Custom sizes and fabrication are available to meet any project.

## GeoGripper® Plate.

The Tru-R GeoGripper Plate is a galvanized steel multi-barbed connector. It is used to restrain rigid foam moving laterally in "layer over layer" applications. Its single piece/two-sided barb design allows for excellent connection between layers in a one-step application.



## Ready to Install.

Tru-R Geofoam maximizes onsite installation efficiency: material arrives ready to place, no weather delays, material can be prefabricated or cut at the jobsite, no staging required, material can be inventoried, production efficiency improved, and it is easy to handle.

## With Tru-R Geofoam, you're the master of your materials.

## Proven to meet, or exceed, building codes.

Tru-R Geofoam is manufactured under an industry leading quality control program monitored by UL and further recognized in UL Evaluation Report UL ER40266-01. Tru-R meets ASTM D6817, "Standard Specification for Rigid, Cellular Polystyrene Geofoam."



## Termite Resistant.

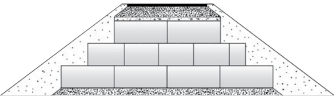
One of the most destructive forces anywhere is termites. Tru-R Geofoam products can be manufactured with borate, a proven and safe additive, that effectively resists termites.\*



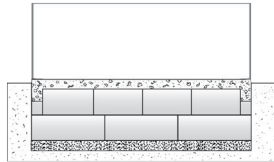
# Tru-R Geofoam

Tru-R Geofoam Solves Problems for these Common Applications:

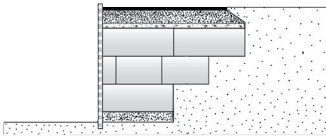
## Lightweight Roads



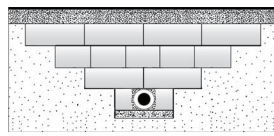
## Foundations



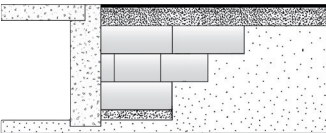
## Retaining Walls



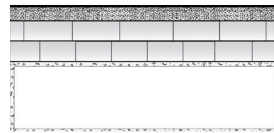
## Weight Reduction for Utilities



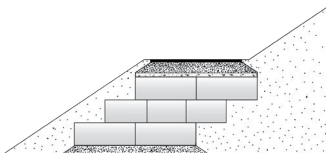
## Bridge Abutments



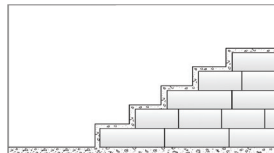
## Weight Reduction for Structures



## Side Hills



## Elevation Changes/ Stadium Seating



# Tru-R GEOFOAM

## FOAM FACTS:

Tru-R Geofoam outperforms other fill material.

- Extremely lightweight to reduce lateral or bearing loads
- Predictable engineered performance
- Various Types available to meet project specific strength requirements
- Can be installed in various weather conditions
- Tru-R allows for more design possibilities
- Tru-R with borate treatment available to provide termite resistance

## Product Availability and Support.

Tru-R Geofoam is supported by a team of experts who work with you to answer your questions, offer solutions, and do everything they can to make sure your project goes smoothly and ends successfully.

## Ready to take control? Start here.

If you're ready to have Tru-R contribute to your next project, just contact your nearest Tru-R manufacturer and Technical Sales Representative. They will be happy to give you design consultation, information about Tru-R products, pricing, and answers to all of your questions.



### **Buffalo**

**(716) 874-6474**

[buffaloinfo@thermalfoams.com](mailto:buffaloinfo@thermalfoams.com)

### **Syracuse**

**(315) 699-8734**

[syracuseinfo@thermalfoams.com](mailto:syracuseinfo@thermalfoams.com)

### **Rochester**

**(585) 247-0324**

[buffaloinfo@thermalfoams.com](mailto:buffaloinfo@thermalfoams.com)

### **Pittsburgh**

**(724) 742-1200**

[buffaloinfo@thermalfoams.com](mailto:buffaloinfo@thermalfoams.com)

### **Albany**

**(518) 621-7960**

[syracuseinfo@thermalfoams.com](mailto:syracuseinfo@thermalfoams.com)

Copyright © 2020 Thermal Foams, Inc.  
All rights reserved. Printed in USA.

GeoGripper is a registered trademark of  
AFM Corporation, Lakeville, MN.

TFG04-06/20