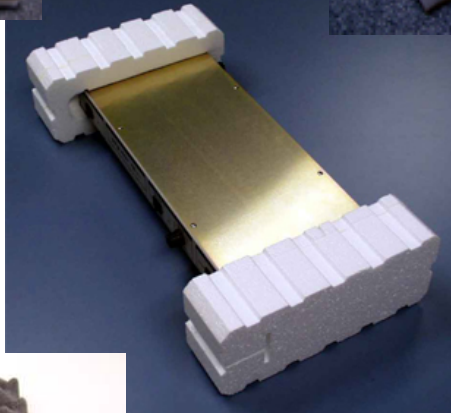
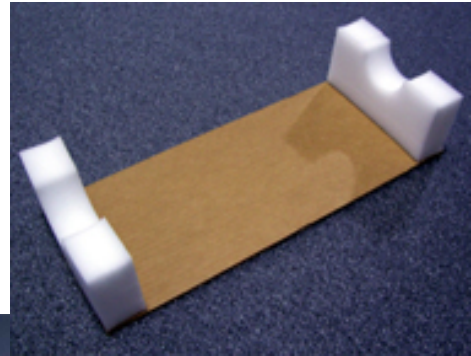


# THERMAL FOAMS, INC.

## *Protective Packaging*



**Custom Packaging Design**

**Die Cut Trays and Inserts**

**Shape Molded Foam**

**Composite Assemblies**

**Polyethylene Roll Stock**

**Convuluted Polyurethane (Egg Crate Foam)**

**Crosslink & EVA Foams**



[www.thermalfoams.com](http://www.thermalfoams.com)

## Packaging Products

Whether commercial, consumer or food application, our design team is available to create a cost effective solution to all your packaging needs. We offer a wide selection of materials to choose from, all geared toward extending product life and enhancing the presentation of your product. Our design team will help you carefully analyze your foam requirements to be sure you select the best possible material for your particular application.

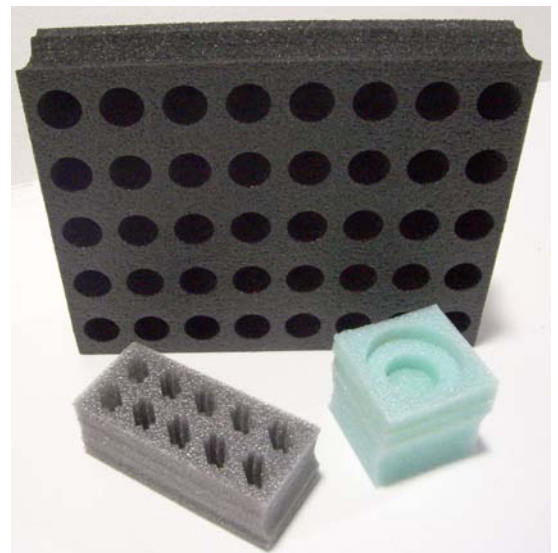
Our computer guided cutting systems (CAD/CAM) can provide you with a package that will meet your exact requirements no matter what your needs. Our production facilities are equipped to supply all industries, such as:

- Automotive
- Medical Equipment
- Electronics
- Point of Sale Display
- Military
- Consumer Goods
- Food
- Pharmaceutical



### Our custom fabrication abilities include:

- Design and Development
- Custom Shape Molded Packaging
- Die Cut Trays and Inserts
- Saw Cutting
- Custom Designed End Cap Assemblies
- Heat Sealing
- Hot Gluing and Laminating
- Composite Assembly (multiple materials)
- And much more.....



## Expanded Polystyrene Packaging

For more than 50 years, the effectiveness of Expanded Polystyrene has been proven in numerous packaging applications used by a wide variety of industries. Lightweight Foam-Control® EPS is ideal for packaging applications due to its physical properties, in particular its cushioning characteristics, dimensional stability and its thermal and moisture resistance.

Lightweight, resilient, attractive Foam-Control® EPS reduces packaging cost as well as product damage. Fewer package components means smaller inventories and increased productivity on the packaging line. Shipping costs are also reduced because of less weight. Shock ribs can be engineered in to reduce weight/material volume, cushion and protect contents. Non-abrasive Foam-Control® EPS protects fine finishes and insulates package contents from temperature changes. Expanded Polystyrene is not weakened or damaged by moisture exposure.

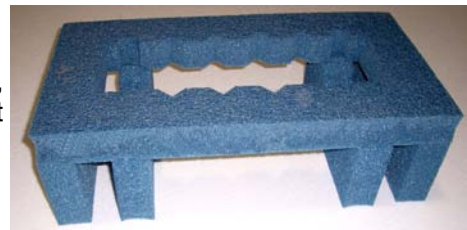
## Polyethylene Packaging

Because of its unique combination of properties Polyethylene can provide multiple impact protection to the most delicate, valuable electronic and computer components. It's resistance to chemicals and rot make it ideal for multiple applications. It's closed cell structure make it virtually impermeable to water and resistant to water vapor transmission. Polyethylene can be die cut and heat sealed to form around any shape or configuration. Thermal Foams Polyethylene is easily fabricated and can be used to cushion, seal and insulate.



Polyethylene foam packaging offers an outstanding combination of physical properties:

- Available in several colors and densities from 1.2 to 9.0 lbs. per cubic foot.
- A high degree of resiliency withstands repeated impacts with minimal loss of physical and mechanical properties.
- An excellent strength-to-weight ratio provides cushioning, immobilization and positioning for heavy items, without significant loss of thickness.



## Polyurethane Packaging

Flexible Polyurethane foams are available in a wide range of densities and colors. Polyurethane's flexibility and physical performance properties make it ideal for protecting even the most fragile items. Flexible Polyurethane has the ability to absorb shock from repeated impacts yet still recover it's original shape quickly, providing continuous support and protection. Thermal Foams can also provide you with Anti-Static Polyurethane for your sensitive electronic items, providing you with impact resistance as well as protection from harmful static discharge.

## Polypropylene

---

Expanded Polypropylene is ideal for packaging applications that require resistance to multiple impacts. It offers improved impact cushioning for heavier products such as appliances and computers. It also provides a higher resistance to heat and chemicals than most other packaging products and is one of the most durable foam packaging materials available. Polypropylene is easily fabricated with a minimal amount of tooling required.

## Crosslink PE

---



Crosslinked foam offers significant advantages over traditional materials such as rubber, solid plastics, corrugated paper, fabric and other similar materials. Crosslink offers enhanced physical properties making it lightweight, shock absorbent, waterproof, non-toxic, durable and tear resistant. Crosslink foam is also available in EVA offering a softer, rubbery feel. EVA Crosslink is ideal for exercise mats and kneepads.



2101 Kenmore Avenue  
Buffalo, NY 14207  
(716) 874-6474  
Fax: (716) 874-8180

20 Leonberg Road  
Cranberry, PA 16066  
(724) 742-2400  
Fax: (724) 742-1202

Dryvit Depot  
631 Trabold Road  
Rochester, NY 14624  
(585) 247-0324



6173 South Bay Road  
PO BOX 1981  
Cicero, NY 13039  
(315) 699-8734  
Fax: (315) 699-4969

**Email: [info@thermalfoams.com](mailto:info@thermalfoams.com)**  
**Website: [www.thermalfoams.com](http://www.thermalfoams.com)**