

**TEXTURED ACRYLIC FINISH SYSTEMS (TAFS)  
OVER ICF HOMES**



# Take Advantage of the ICF Revolution!



Insulated Concrete Forms (ICFs) are a high-performance wall system consisting of lightweight, interlocking expanded polystyrene forms, which remain in place after the concrete is poured. As an integral part of the wall, the polystyrene forms are also the ideal substrate for Dryvit's Textured Acrylic Finish Systems (TAFS). Together, the two products provide a strong, quiet, energy-efficient and beautiful wall, which meets and exceeds the standards established by the IRC building code.

## What makes ICFs such a great wall system?

**Energy Efficiency**...ICFs are extremely energy efficient, which can save you money on your heating and cooling costs (see chart below).

**Lower Cost**...ICFs result in a dramatic labor reduction. When you build with ICFs, you incorporate: insulation, vapor barrier, air barrier, studding and sheathing all at once. This saves you labor, time and money. According to the ICF Association, you may save significantly on your insurance costs as well!

**Strong**...ICFs can be engineered to withstand winds of more than 200 MPH.

**A Comfortable, Quiet Home**...Along with the strength to withstand hurricanes, ICFs contain no CFCs, HCFCs or Formaldehyde. Your home can truly be "healthy." In addition, ICFs come with an impressive STC rating (Sound Transmission Class) of 50 (ASTM E 413), which means outside noise is reduced to a whisper.

## Energy Savings— ICF vs. Wood-Frame Homes

Year-Round Energy Efficiency!	Percentage Energy Savings
Heating Energy Savings	44.25%
Cooling Energy Savings	32.03%
Heating & Cooling Energy Savings	41.93%



Standard ICF form with various Dryvit TAFS options shown on exterior

SOURCE: PORTLAND CEMENT ASSOCIATION  
"ENERGY COMPARISON OF CONCRETE HOMES VS. WOOD FRAME HOMES," 2004  
STUDY WAS BASED ON RESULTS FROM 29 ICF AND 29 WOOD FRAME HOUSES IN THE UNITED STATES AND CANADA

For more information on ICFs, visit [www.forms.org](http://www.forms.org) or call 1-888-864-4232.

# Beauty That Is More than Skin Deep

## Dryvit TAFS Help Sell ICF Homes



A great wall definitely deserves a great finish. Dryvit Textured Acrylic Finish Systems (TAFS) make ICF walls even better by allowing you the flexibility to make the exterior of your ICF home as beautiful on the outside as it is strong and energy efficient on the inside. You can use a seemingly endless combination of finishes, textures and decorative shapes to create the home you've always dreamed of owning.

Maybe you've always wanted your home to have a classic limestone exterior or a granite appearance. With Dryvit TAFS, those options are only a small number of the many great finishes and textures you can add to the exterior of your home. Use

them in combinations to create a particularly dazzling finished appearance.

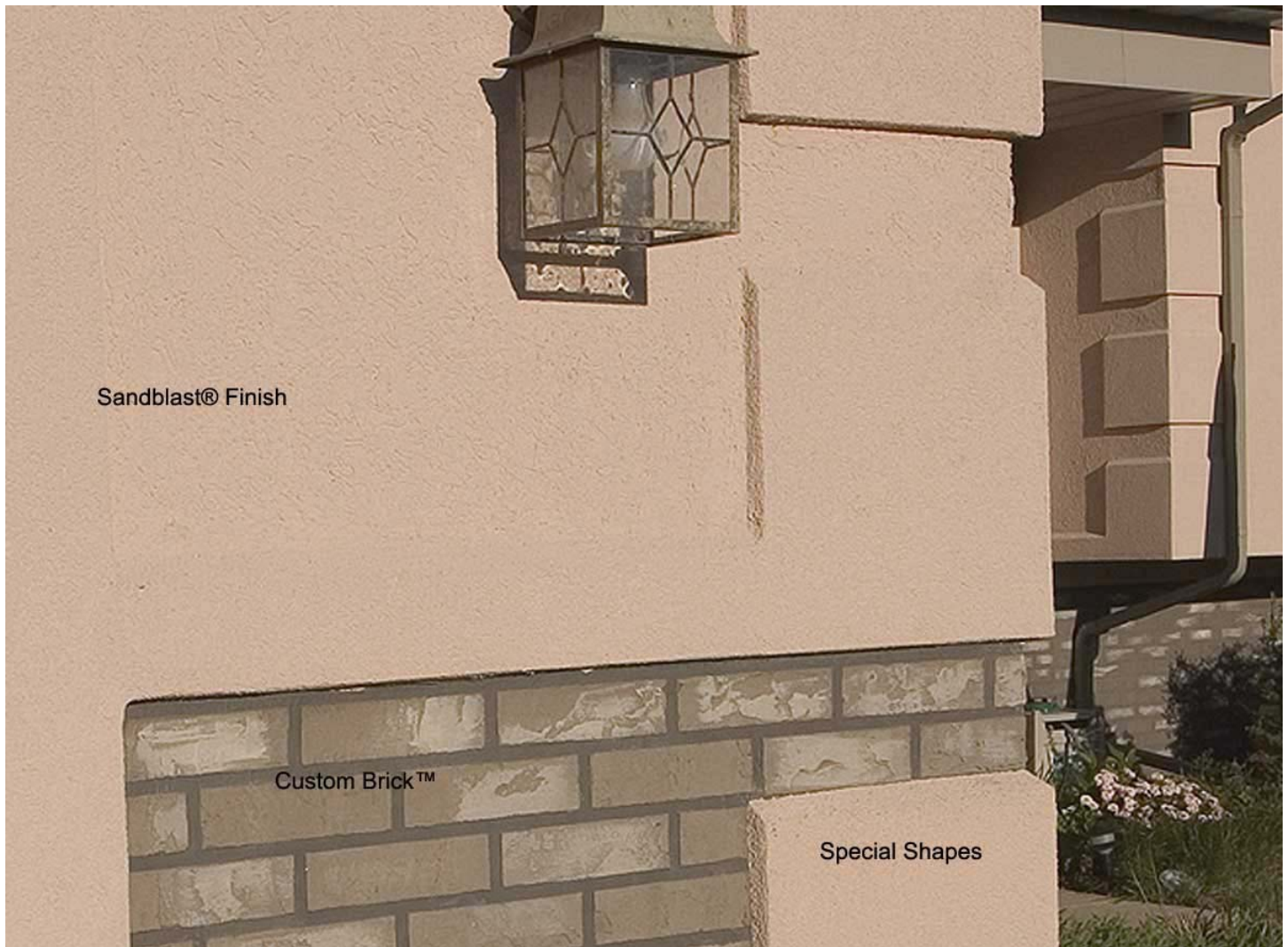
Are you looking for a brick exterior on your ICF home? Easy. Just use Dryvit Custom Brick™, and you will have the brick look you've always wanted without having to sacrifice energy efficiency or design freedom.

In short, the design options available to you are only limited by your imagination. Choose from a wide palette of colors and textures and decorative shapes to create the exterior design you have always imagined but never thought possible.



Finish Options

Call 1-800-556-7752 or visit us on the web at [www.dryvit.com](http://www.dryvit.com) to find out more about Dryvit TAFS over ICFs.



## The Simplicity and Beauty of Dryvit TAFS over ICFs!

### Dryvit TAFS over ICFs Provide:

- The potential for a smaller HVAC system, reducing cost and potentially lowering energy bills
- Seamless integration of different finishes without the need for multiple contractors
- Stylish curb appeal, increasing the home's value
- A quiet home
- A comfortable and attractive home — both inside and out!

Dryvit Systems, Inc.  
One Energy Way  
P.O. Box 1014  
West Warwick, RI 02893  
800-556-7752  
www.dryvit.com

Printed in USA Issue Date: 01-01-05  
©Dryvit Systems, Inc. 2005

Information contained in this brochure conforms to the standard detail recommendations and specifications for the installation of Dryvit Systems, Inc. products as of the date of publication of this document and is presented in good faith. Dryvit Systems, Inc. assumes no liability, expressed or implied, as to the architecture, engineering or workmanship of any project. To ensure that you are using the latest, most complete information, contact Dryvit Systems, Inc.

**dryvit**®   
An **RPM** Company